



Range of domestic MVHR units with high efficiency counterflow heat exchanger (up to 92%) and low consumption EC motors. The units assures a continuous and balanced ventilation system, extracting moist stale air from the wet rooms and at the same time introducing a tempered and filtered fresh air to the habitable rooms. The optimized design allows compliance with the highest standards assuring a very low leakage level, high thermal insulation and a minimal sound level. The integrated humidity sensor allows an automatic function tracking the indoor humidity and proportionally adjusting the fans speed.

The unit contains as a standard iso coarse 65% (G4) filters in the supply and extract airflows to clean the incoming air and protect the heat exchanger. For higher air quality an optional ePM1 70% (F7) filter can be installed in the supply air channel.

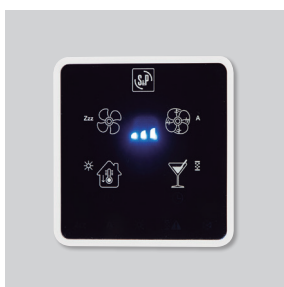
An integrated 100% bypass is activated either automatically or manually. The bypass is particularly useful when the indoors temperature is higher than outdoors and free cooling is preferable.

INSTALLATION FRIENDLY

A versatile product with advantages for installation.

The airflow direction paths can be handed to allow for alternate on-site configurations of duct routing.

A range of accessories lets the end user tailor the functions of the system to their specific requirements.

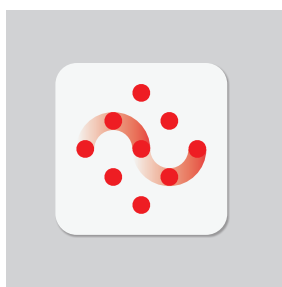


Touch screen

Remote (wired) touch screen display panel.

Functions:

- Easy control.
- Speed settings.
- Manual bypass.
- Boost activation.
- Automatic mode activation.
- Dirty filter alarm.



Connectair

Through the optional SPCM module, the unit can access Connectair, S&P's IoT that provides access to a new way to enjoy your ventilation.



Installer friendly

Simple access to all the components.

Characteristics:

- High efficiency counterflow heat exchanger.
- Low consumption EC motors.
- Minimal sound level.
- Automatic/manual bypass.
- Possibility of impulsion through the lower face.
- Install friendly.
- User friendly.
- Customisable.
- Modularity:
 - Integrable preheating coil (optional).
 - SERVOFLOW module for constant flow (optional).
 - Integrable VOC probe (optional)
- Connectivity through the SPCM communication module (optional).

Specific applications



Domestic MVHR
Single dwelling



Domestic MVHR
Multi dwelling blocks



Heat recovery

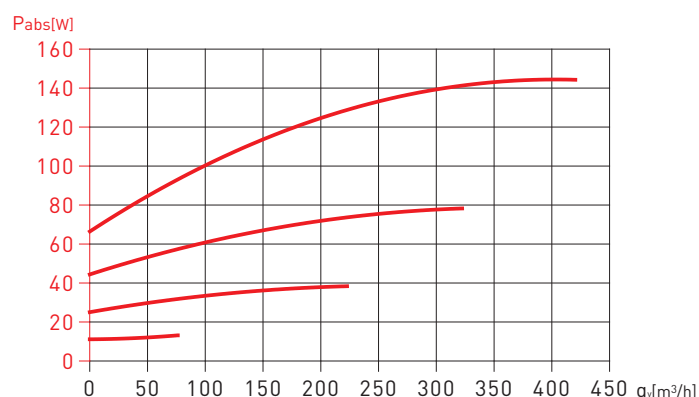
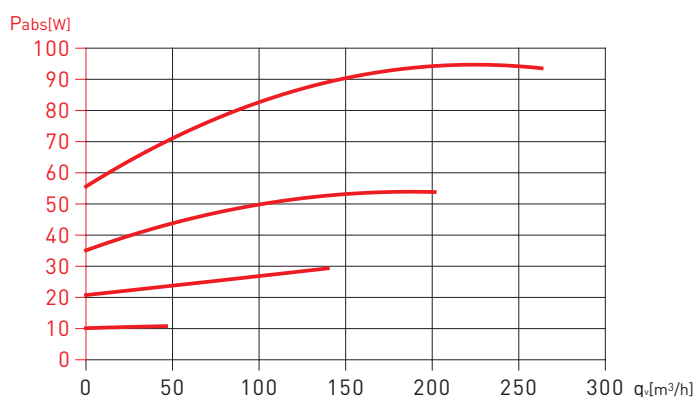
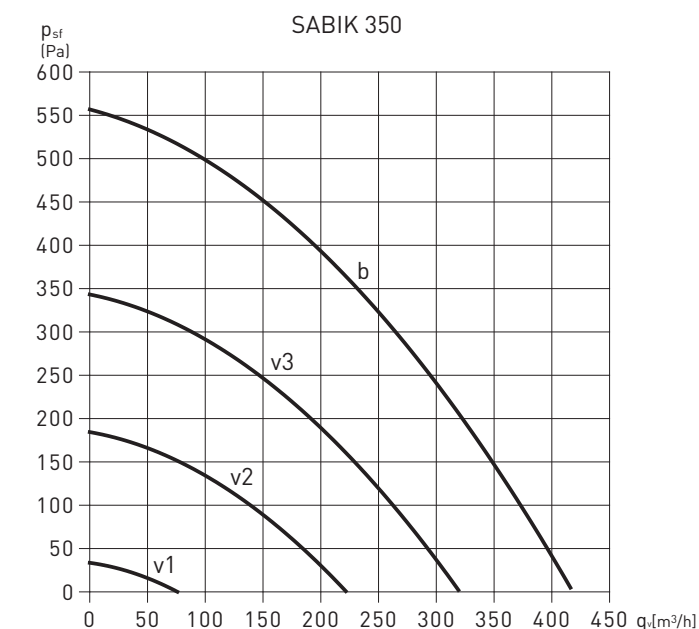
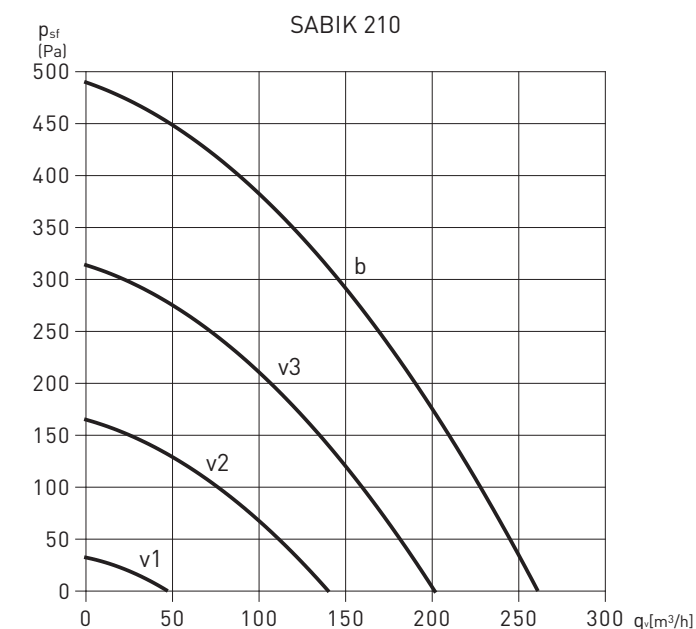
TECHNICAL CHARACTERISTICS

It is essential to check that the electrical characteristics (voltage, current, frequency, etc.) of the motor which appear on the motor plaque are compatible with those of the installation.

| Model | Supply | Maximum flow rate at 100 Pa (m ³ /h) | Sound pressure level, at 1.5m (dB(A)) | Maximum absorbed power (W) | Efficiency ErP (%) |
|-----------|--------------|---|---------------------------------------|----------------------------|--------------------|
| SABIK 210 | 230V 50/60Hz | 225 | 36,5 (140 m ³ /h a 100 Pa) | 87 | 87 |
| SABIK 350 | 230V 50/60Hz | 375 | 37,7 (250 m ³ /h a 135 Pa) | 145 | 85 |
| SABIK 500 | 230V 50/60Hz | 550 | 43,1 (400 m ³ /h a 150 Pa) | 265 | 85 |

CHARACTERISTIC CURVES

- q_v = Flow rate (m³/h).
- p_{sf} = Static pressure in Pa.
- P_{abs} = Absorbed power (W).



- v1 = Humidity protection airflow
- v2 = Reduced airflow
- v3 = Nominal airflow
- b = Boost. Useless curve when working in auto*

*Auto mode will control the speed between v1 and v3 depending on RH/VOC-accessory-/CO2 -accessory-.

- v1 = Humidity protection airflow
- v2 = Reduced airflow
- v3 = Nominal airflow
- b = Boost. Useless curve when working in auto*

*Auto mode will control the speed between v1 and v3 depending on RH/VOC-accessory-/CO2 -accessory-.

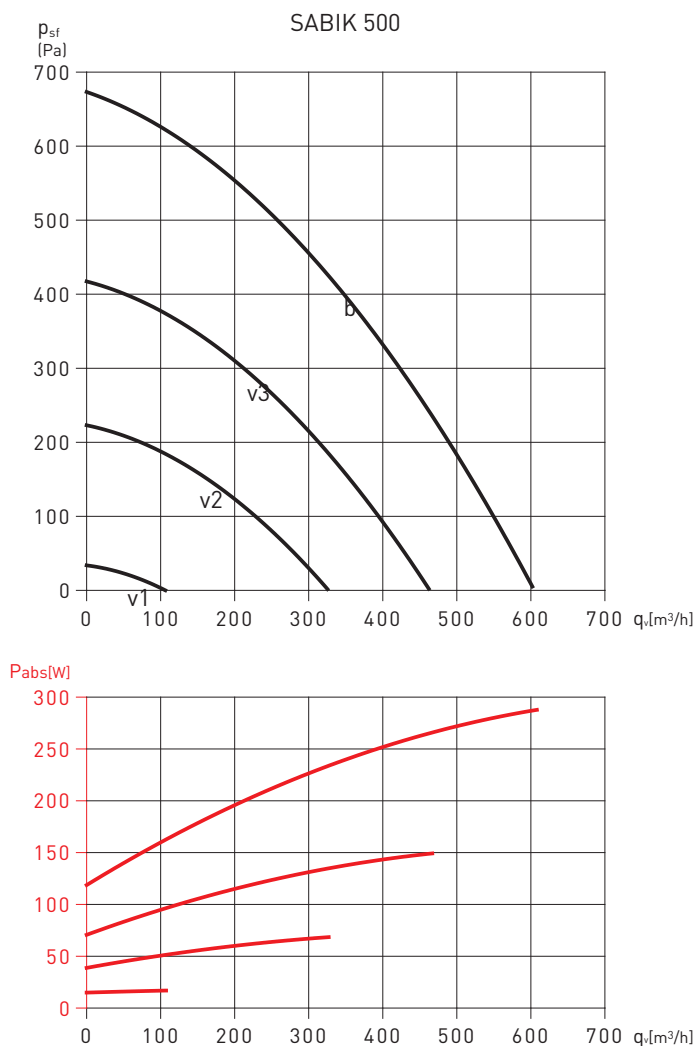
CHARACTERISTIC CURVES

- q_v = Flow rate (m^3/h).
- p_{sf} = Static pressure in Pa.
- P_{abs} = Absorbed power (W).

v1 = Humidity protection airflow
v2 = Reduced airflow
v3 = Nominal airflow

b = Boost. Useless curve when working in auto*

*Auto mode will control the speed between v1 and v3 depending on RH/VOC-accessory-/CO2 -accessory-.



SOUND DATA

The following tables show information with regards to sound pressure measured at 1,5 m distance (L_p) (dB(A)) according to reference duty points.

For more information regarding the sound spectrum or sound data for other duty points, please go to our online selector: <https://easyvent.solerpalau.com/>

| SABIK 210 - Supply - Sound pressure (dB(A)) | | | |
|---|-------------|-------------|-------------|
| (Pa) | 225 m^3/h | 150 m^3/h | 100 m^3/h |
| 150 | - | 32 | 27 |
| 100 | 38 | 31 | 25 |
| 50 | 37 | 28 | 24 |

| SABIK 210 - Extract - Sound pressure (dB(A)) | | | |
|--|-------------|-------------|-------------|
| (Pa) | 225 m^3/h | 150 m^3/h | 100 m^3/h |
| 150 | - | 41 | 37 |
| 100 | 45 | 39 | 34 |
| 50 | 44 | 37 | 30 |

| SABIK 210 - Radiated - Sound pressure (dB(A)) | | | |
|---|-------------|-------------|-------------|
| (Pa) | 225 m^3/h | 150 m^3/h | 100 m^3/h |
| 150 | - | 37 | 33 |
| 100 | 43 | 35 | 30 |
| 50 | 42 | 33 | 28 |

| SABIK 350 - Supply - Sound pressure (dB(A)) | | | |
|---|-------------|-------------|-------------|
| (Pa) | 350 m^3/h | 225 m^3/h | 150 m^3/h |
| 150 | 36 | 36 | 29 |
| 100 | 35 | 31 | 25 |
| 50 | 35 | 28 | 20 |

| SABIK 350 - Extract - Sound pressure (dB(A)) | | | |
|--|-------------|-------------|-------------|
| (Pa) | 350 m^3/h | 225 m^3/h | 150 m^3/h |
| 150 | 51 | 42 | 38 |
| 100 | 49 | 39 | 34 |
| 50 | 46 | 37 | 32 |

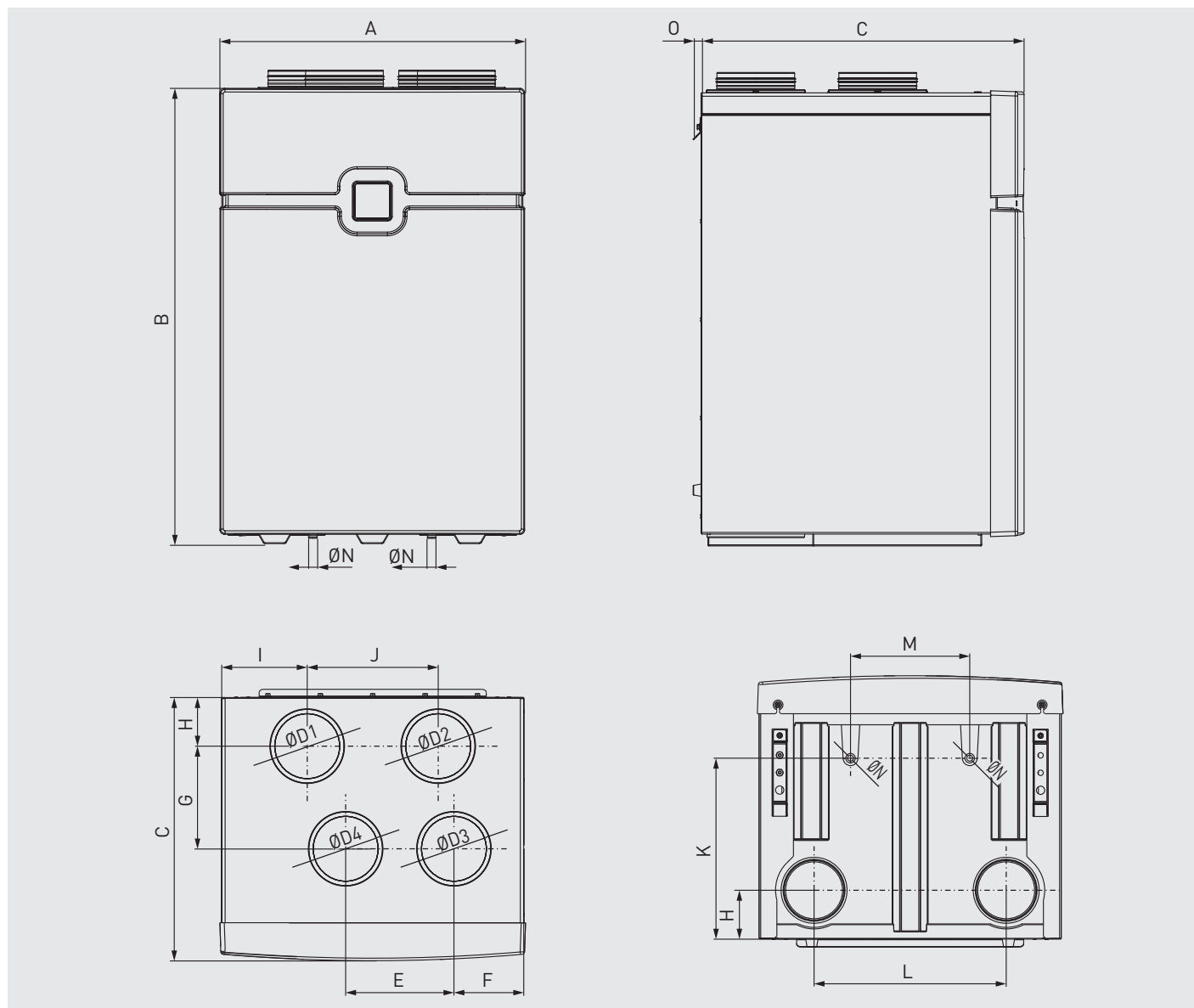
| SABIK 350 - Radiated - Sound pressure (dB(A)) | | | |
|---|-------------|-------------|-------------|
| (Pa) | 350 m^3/h | 225 m^3/h | 150 m^3/h |
| 150 | 42 | 37 | 33 |
| 100 | 41 | 34 | 31 |
| 50 | 40 | 33 | 28 |

| SABIK 500 - Supply - Sound pressure (dB(A)) | | | |
|---|-------------|-------------|-------------|
| (Pa) | 500 m^3/h | 350 m^3/h | 200 m^3/h |
| 150 | 43 | 42 | 31 |
| 100 | 43 | 39 | 28 |
| 50 | 42 | 35 | 24 |

| SABIK 500 - Extract - Sound pressure (dB(A)) | | | |
|--|-------------|-------------|-------------|
| (Pa) | 500 m^3/h | 350 m^3/h | 200 m^3/h |
| 150 | 53 | 46 | 39 |
| 100 | 52 | 44 | 37 |
| 50 | 50 | 42 | 34 |

| SABIK 500 - Radiated - Sound pressure (dB(A)) | | | |
|---|-------------|-------------|-------------|
| (Pa) | 500 m^3/h | 350 m^3/h | 200 m^3/h |
| 150 | 44 | 41 | 34 |
| 100 | 43 | 39 | 31 |
| 50 | 42 | 37 | 28 |

DIMENSIONS (mm)

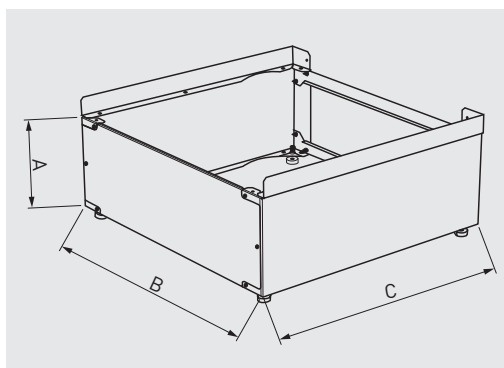


| Model | A | B | C | D1 | D2 | D3 | D4 | E | F | G | H | I | J | K | L | M | N | O | Weight (kg) |
|-----------|-----|------|-----|-----|-----|-----|-----|-----|-----|-----|-----|-----|-----|-----|-----|-----|----|----|-------------|
| SABIK 210 | 600 | 995 | 460 | 125 | 125 | 125 | 125 | 215 | 125 | 180 | 94 | 161 | 215 | 313 | 392 | 267 | 21 | 19 | 37 |
| SABIK 350 | 700 | 1046 | 603 | 150 | 150 | 150 | 150 | 248 | 160 | 235 | 111 | 196 | 300 | 414 | 440 | 273 | 21 | 19 | 50 |
| SABIK 500 | 700 | 1046 | 753 | 180 | 180 | 180 | 180 | 257 | 153 | 280 | 126 | 196 | 300 | 493 | 440 | 273 | 21 | 19 | 63 |

DIMENSIONS SABIK-FM (mm)



Optional accessory for floor mounting.

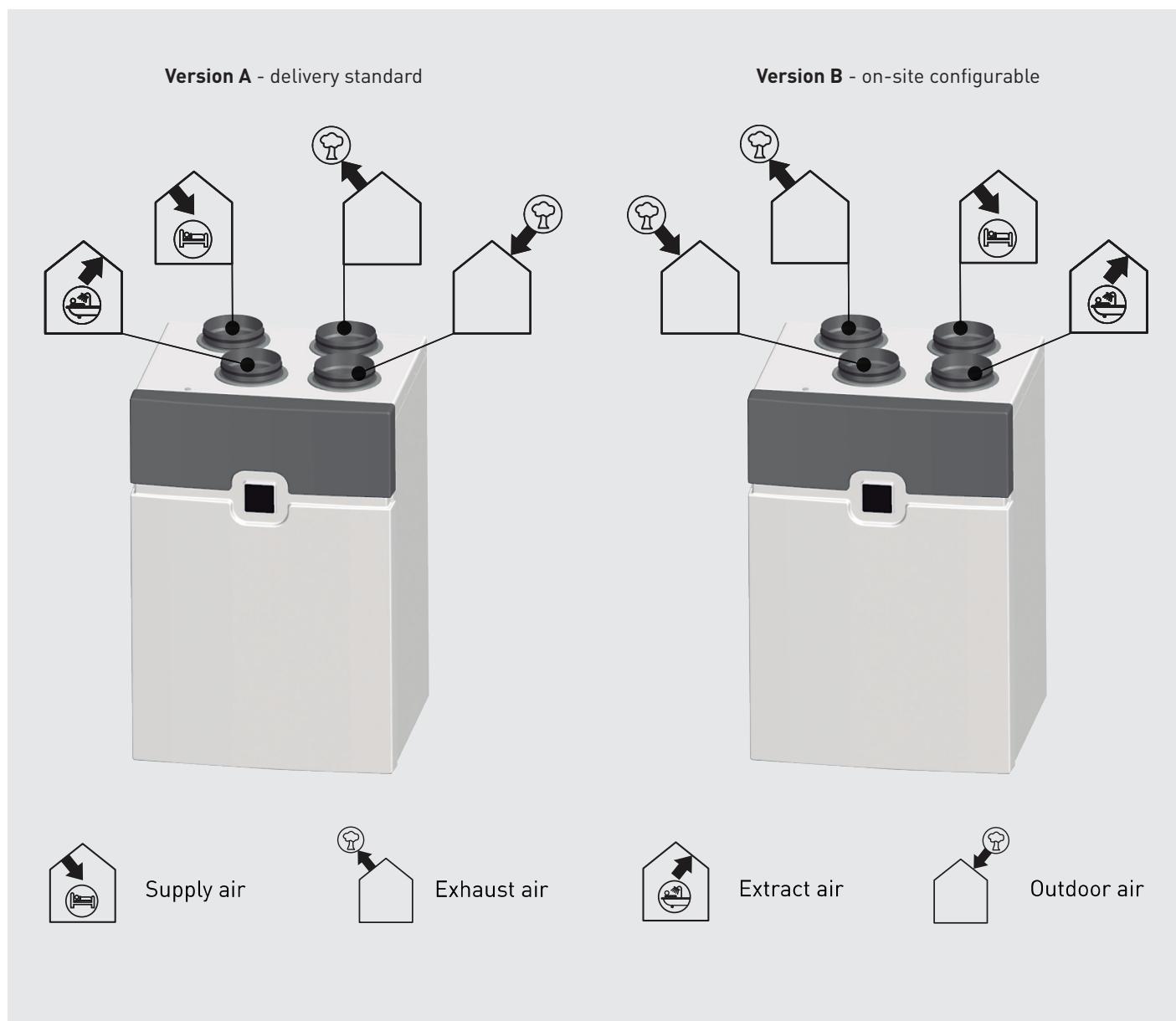


| Model | A | B | C |
|--------------|-----|-----|-----|
| SABIK-210 FM | 250 | 600 | 376 |
| SABIK-350 FM | 250 | 700 | 512 |
| SABIK-500 FM | 250 | 700 | 662 |

FLEXIBILITY

As standard, SABIK units are delivered with the indoor connections at the left-hand side of the unit (version A). However, for flexible installation of the ventilation system, the handing can be changed at the installation site.

In the following image, the configuration of air connections for version A/B is displayed.



SABIK SPECIFIC ACCESSORIES



SPCM
 Communications module. Control the heat recovery unit via cloud (CONNECTAIR platform).



SABIK F
 Filter replacement sets G4/G4 and G4/F7.



SABIK-PH
 Preheating coils can be integrated into the equipment. Plug&Play.



SABIK-VOC
 VOC probe can be integrated into the unit. Plug&Play.



SABIK-WMC
 Wall spacer bracket.



SABIK-NEMBUS-SF
 Constant flow module that can be integrated into the unit. Plug&Play.



DSI
 Dry siphon.



SABIK-FM
 Bracket for floor installation.

ELECTRICAL ACCESSORIES



AIRSENS C02
 CO2 - Indoor air quality sensor for demand-controlled ventilation.
 Supply: 230V 50 Hz.
 Output: 0-10V.
 Max 4 sensor per unit.
 Available versions: VOC and RH.



AIRSENS RF C02
 CO2 - Indoor air quality sensor for demand-controlled ventilation.
 Supply: 230V 50 Hz.
 Radiofrequency communication (wireless).
 A receiver REC. AIRSENS RF is required.
 Max 4 sensor per receiver.
 Available versions: VOC and RH.



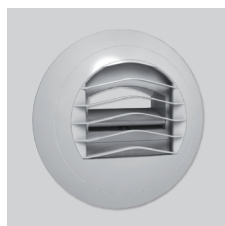
REC. AIRSENS RF
 Radiofrequency receiver to control up to 4 sensors AIRSENS RF.



AIRSENS WIFI C02
 CO2 - Indoor air quality sensor for demand-controlled ventilation.
 Supply: 230V 50Hz.
 WIFI communication.
 Air quality monitoring and control of the heat recovery unit* via cloud (CONNECTAIR platform).
 Available in versions: VOC and RH.

*In order to control the heat recovery unit via cloud, SPCM accessory is required.

ASSEMBLY ACCESSORIES



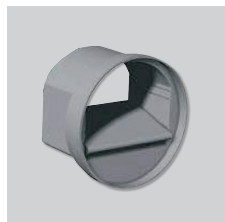
**BARJ
 BARP**
 Auto-adjustable
 suction inlets.



BDOP
 Supply and
 extraction inlets.



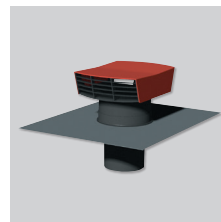
RDR
 Auto-adjustable flow
 regulators. To be
 installed inside the
 duct.



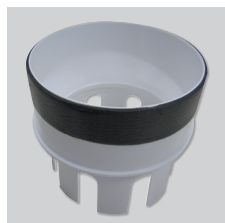
RD BP
 Auto-adjustable
 low-pressure flow
 regulators.
 (20-100 PA) To be
 installed inside the
 duct. 80mm diameter.
 Flow rate: 15 or
 30 m³/h.



RD BP SM
 Auto-adjustable flow
 regulators.
 To be installed inside
 the cuff of the BDOP
 nozzles.
 80mm diameter.
 Flow rate: 15 or
 30 m³/h.



CT
 Roof covers.



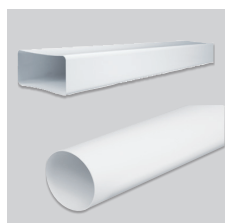
ADRF 100/80
 Reducer to connect
 rigid different
 diameter ducts.



GPR-ISO
 Rigid insulated ducts.



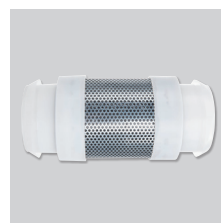
**GP
 GPX
 GP-PRO
 GP-ISO**
 PVC ducts.



TUBREC
 Rectangular ducts
 in flame-retardant
 plastic.



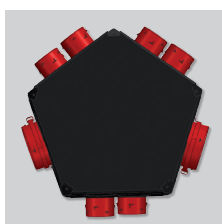
LAF
 Flexible acoustic
 connection.
 Length: 0.5 and
 1m models.



LA
 Acoustic connection.



FLEXIREC
 Semi-flexible oblong
 ducts.



PLENUM UNI EXT 6+1
 Isolated delivery
 plenum with outlet
 Ø 125/150-160 mm,
 1 kitchen Ø 125 mm
 outlet and up to
 a maximum of
 6 bathroom Ø 80 mm
 outlets.



PLENUM UNI IMP 8
 Isolated delivery
 plenum with suction
 Ø 125/150-160 mm,
 and up to a maximum
 of 8 outlets for
 dry areas (dining
 room, living room,
 bedrooms)
 Ø 80 mm.